

# MADRE 2015 Financial Summary

## Public Support and Revenue:

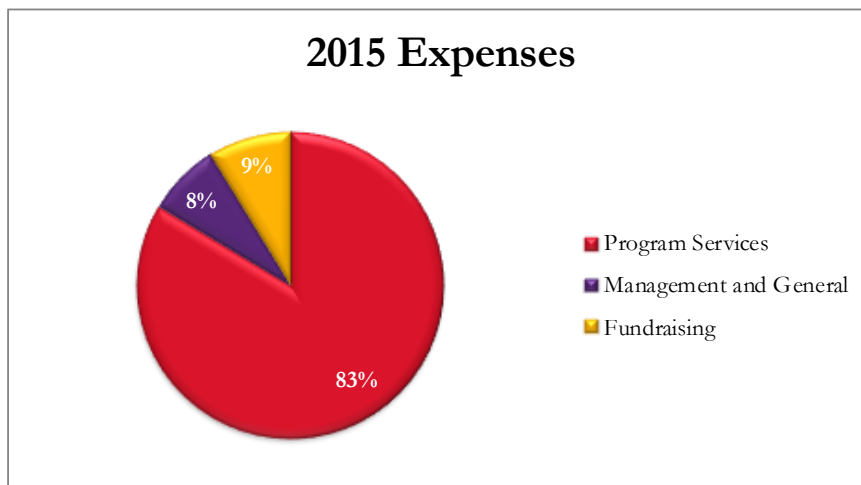
	Unrestricted	Temporarily Restricted	Total
Contributions and Grants	\$1,755,158	\$630,798	\$2,385,956
Net assets released from restrictions	\$724,820	(\$724,820)	\$0
Interest and other income	\$60,468		\$60,468
In-kind contributions	\$1,258,776		\$1,258,776
<b>Total Public Support and Revenue</b>	<b>\$3,799,222</b>	<b>(\$94,022)</b>	<b>\$3,705,200</b>

## Assets:

	Unrestricted	Temporarily Restricted	Total
Net assets as of December 31, 2015	\$2,522,395	\$2,754,248	\$5,276,643

## Expenses:

	Total
Program Services	\$3,148,296
Management and General	\$288,617
Fundraising	\$329,874
<b>Total Expenses</b>	<b>\$3,766,787</b>



MADRE audit firm: Schall and Ashenfarb, 350 Fifth Avenue, Suite 728, New York, NY 10118

A complete copy of the audited financial statements and MADRE's IRS Form 990 are available upon request.